



TOUCHSTONE
TESTING LAB



◆ Touchstone Testing Lab, LLC

☎ (304) 987-4010

🌐 www.touchstonetesting.com



Corrosion / Environmental Testing

TTL has the equipment and experience to provide corrosion resistance and environmental testing on your materials and products. We offer services per popular ASTM and ISO methods including but not limited to the following:

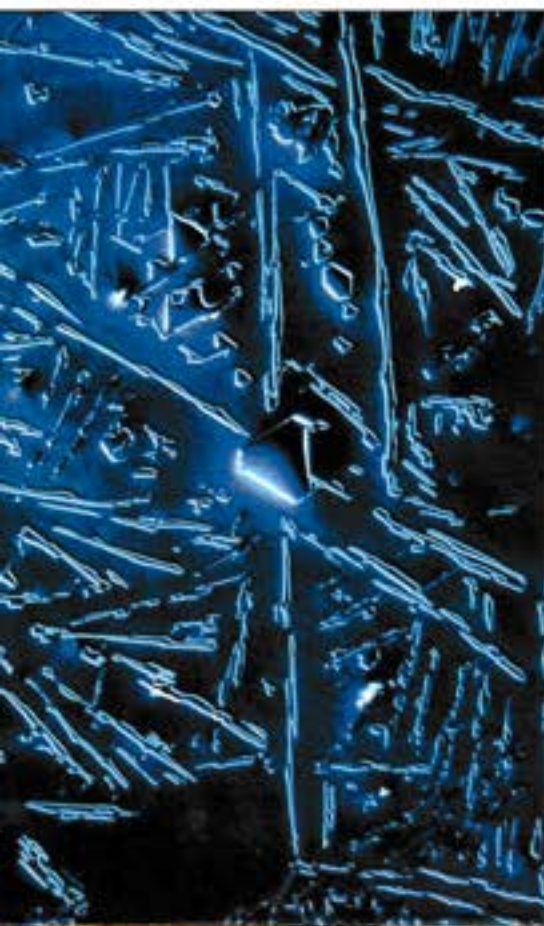
- ASTM B117 (Salt Spray)
- ASTM B368 (CASS)
- ASTM D1735
- ASTM G85 A1
- ASTM G85 A2
- ASTM G85 A3 (SUJAAT)
- ASTM G85 A4 (S02)
- ASTM G85 A5 (CYCLIC)
- ASTM G154 (UV/Condensation)
- ASTM G66 (ASSET)
- ASTM G67 (NAMLT)



Mechanical Testing

TTL has several state of the art load frames with load capabilities ranging from a few Newtons to several hundred kilo Newtons. We provide mechanical testing services to companies in a wide range of industries including aerospace, automotive, marine, etc., on materials including metals, alloys, ceramics, glass, concrete, fibers, polymers, and composites. We offer testing per many of the most popular ISO and ASTM methods including but not limited to the following:

- | | |
|------------------------|----------------------------------|
| Tensile | Compression |
| Shear | Flexural / Bend |
| Fatigue | Creep / Stress Rupture |
| Poisson's Ratio | Cryogenic / Elevated Temperature |
| Notched Bar Impact | Fracture Toughness |
| R-Value for Sheetmetal | N-Value for Sheetmetal |



Failure Analysis

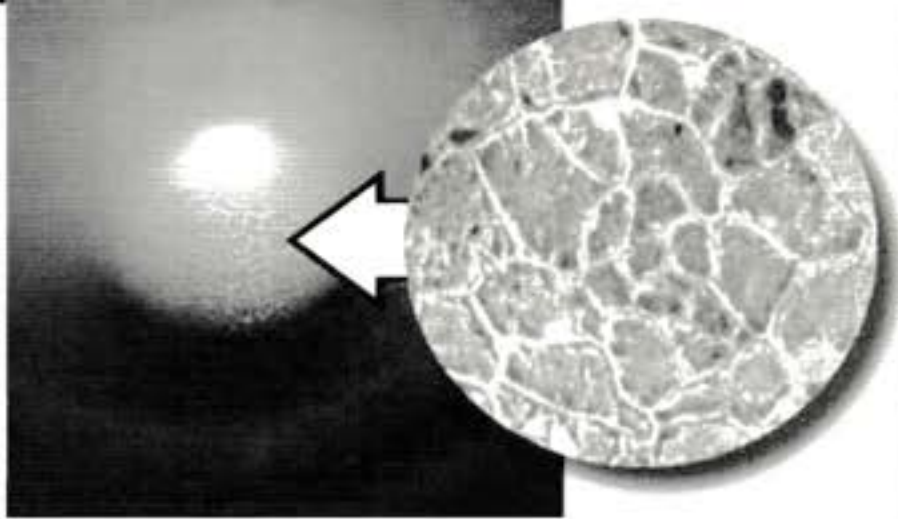
With over 30 years of experience in failure analysis investigations, TTL can help you figure out what went wrong and what can be done to help avoid similar unwanted situations in the future. The capability to easily access and utilize in house services like those listed below gives us the unique ability to assess your situation, perform relevant testing, and provide you with the fast, reliable information that you need.

- SEM / EDS Services
- Metallography
- Image Analysis
- Grain Size Measurements
- Hardness / Microhardness Measurements
- Dye Penetrant Inspection
- Field Analysis

About Us

TTL is a customer focused company striving to be the "best in class" service provider for materials testing, materials characterization, failure analysis, material development support services, machining, and prototyping services. We are comprised of a staff that is fully trained with university educations from Bachelors to Doctoral degrees as well as high school educations with specialized training in various fields of physical, chemical and biological sciences, and technologies. With more than one hundred years of combined experience between our employees, we are ready to approach any problem our customers may have. Aerospace, automotive, and power generation original equipment manufacturers (OEMs) as well as mining, and materials manufacturers are our major customers. We collaborate with our parent companies, Standard Laboratory (www.standardlabs.com) for additional services like coal testing, water testing, environmental testing, etc., and Touchstone Research Laboratory (www.trl.com) for thermophysical property testing.





Lab Testing Services

Adhesion
Coal Testing
Concrete Testing
Falling Sand
Fiber Testing
Formability (Olsen Cup and Earring)
Gel Time
Gloss
Grain Size
Hardness
Humidity
Image Analysis
Laminate Testing
Mechanical Testing
Metallography
Microhardness (Knoop and Vickers)
Paint / Coating Thickness
Pencil Hardness
Salt Spray / Corrosion
Soil Testing
SEM/EDS Analysis
UV / Condensation

Certifications / Accreditations

Touchstone is committed to providing its customers with quality, reliable test results. That is why we have undertaken the rigorous steps needed to meet and secure the most stringent of test lab accreditations including ISO/IEC 17025, NADCAP 7101 (Materials Test Lab) and NADCAP 7122-1 (Non-Metallics Materials Testing)



Touchstone Testing Lab, LLC

1034 Middle Creek Road
Triadelphia, WV 26059
(304) 907-4010

info@touchstonetesting.com

www.touchstonetesting.com